

LDC Conference 2022

Key issues in Dentistry

Andrew Dickenson
Chief Dental Officer



Llywodraeth Cymru
Welsh Government

www.gov.wales



In Search of the Perfect Health System

Mark Britnell

The NHS is a
complex
adaptive system



“There is no single breakthrough that can solve all those things...the single most useful thing individuals can do is to educate themselves and better judge the impact of various solutions”

“Change is Imperfect”

An alternative guide to the new NHS in England

The Kings fund

Politics

People
Profession

“The farther back you can look, the farther forward you are likely to see”

Winston Churchill

The bigger picture

Stephen Hancocks OBE
Editor-in-Chief

Send your comments to the Editor-in-Chief, British Dental Journal, 84 Wimpole Street, London W1G 8FS Email: bdj@bda.org

EDITORIAL

Just because we operate in confined surroundings does not mean that we should restrict our view of the world around us. By nurturing a broader awareness we can find greater personal fulfilment as well as the potential to discover improved and more imaginative ways to better serve our patients, their health and their welfare.

...irely surprising given the older gravitate there to retire. What these areas also had the high- to other parts of the UK, the l. Part of the reason has to be rmed and more aware of pre- more attuned to the signs and onomic groups that, broadly, rly advice, are possibly more avail themselves of the greater benefits that accrue.

This link between health, environment and economics was brought into sharp relief at the recent FDI Congress in Stockholm with a remarkable presentation by Hans Rosling entitled 'Oral health - a global perspective - or has the world become a better place?' Using some very clever software and indulging his obvious and enviable flair for showmanship, Dr Rosling enchanted his very large audience with computer graphics that showed international trends in disease prevalence. These charts literally moved in front of our eyes as caries for example was shown to have shifted markedly in different nations over the past fifty years. Spellbinding as this technological wizardry was, the greater fascination was the mapping of this data on other trends such as the number of children in families, dropping to an unexpected extent throughout the world, and rising gross national product per head of population.

Our greater awareness nowadays consequent upon increased knowledge as well as the means to track, analyse and more easily communicate it means that the hunches that we once held can now be given flesh and bones. So, the analysis of the incidence, risk factors, aetiology and social profile of mouth cancer as a pertinent example enable greater targeting and no doubt in due time will bring improved results.

Just because we operate in confined surroundings does not mean that we should restrict our view of the world around us. By nurturing a broader awareness we can find greater personal fulfilment as well as the potential to discover improved and more imaginative ways to better serve our patients, their health and their welfare.

1. Williams M, Scott S. Is there scope for providing oral cancer health advice in dental access centres? *Br Dent J* 2008; 205: E16

SOCIAL DETERMINANTS AND ORAL DISEASE

It does, however, highlight once again in terms of the wider horizon the role that social determinants play in illness and disease. A fascinating insight of this came to light recently when figures for cancers in general in the UK were released in the form of a geographical representation. There was a concentration of some carcinomas in patients along the South Coast

BRITISH DENTAL JOURNAL VOLUME 205 NO 8 OCT 20 2008 DOI: 10.1038/sj.bdj.2008.901

411



House of Commons
Health Committee

Dental Services

Fifth Report of Session 2007-08

Volume III
Oral and written evidence

Ordered by The House of Commons
to be printed 23 June 2008

HC 289-III
Published on 2 July 2008
by authority of the House of Commons
London: The Stationery Office Limited
£0.00

THE COMPETITIVE MARKET

PEOPLE and



NICE

WHR

1. Political perspective



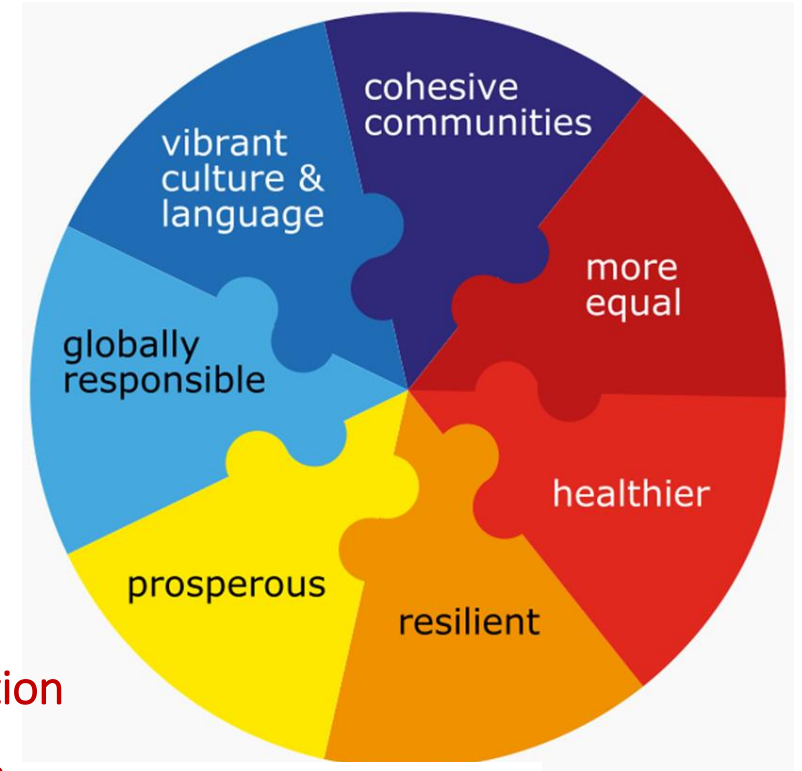
Llywodraeth Cymru
Welsh Government

The oral and dental
services response

A Healthier Wales:
our Plan for Health and Social Care

A Healthier Wales Well-being of Future Generations Act (2015)

- 5 priority areas to support implementation
- This was the catalyst needed for change



Patients + the public at the heart of everything we do

A Step Up in Prevention

Dental Services Fit for
Future Generations

Developing Dental Teams
and Networks

2. People perspective

Health across the life course



Key: Access

- Co-production = design with patients ie; stop 'doing' to patients but 'with' patients, based on their needs.
- Research on complex adaptive systems shows that relatively simple rules can produce sustainable, innovative system behaviour – unify the messages
- Health literacy
- Self-care – behavioural change (*Needs & Risk based recall*)

3. Professional perspective



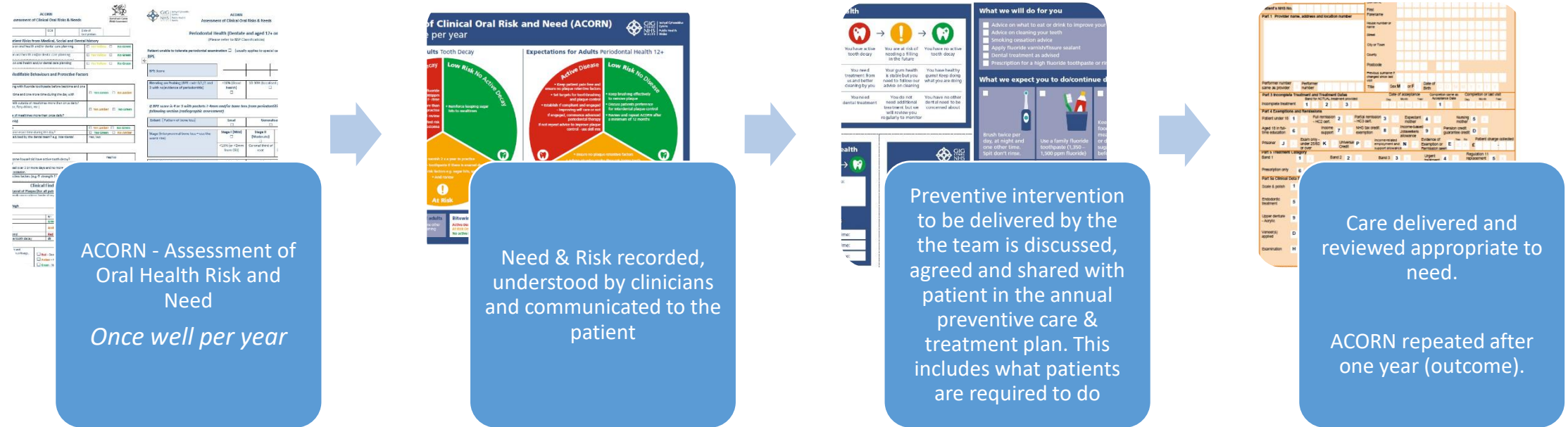
The Next Normal...Workforce

- Increasing demand for urgent dental care
- Geographical imbalance in supply and demand of services
- Attraction, recruitment & retention
- Limited pipeline of UK trained dentists
- Traditional role models, outdated curricula and professional interests restrict innovation
- NHS Dental services are not integrated with other health services.

5 key priorities for transformational change in Welsh dental services

- Timely access to prevention focussed care
- Sustained and whole system change underpinned by contract reform
- Expanded teams that are trained, supported and delivering to scope of practice
- Oral health intelligence & evidence driving improvement and planning
- Improve population health and well-being

Patient journey & clinical pathway



- Consistent assessment of oral health need and risk (modifiable and non-modifiable) – ‘the ACORN’
- Co-production of a needs led annual prevention care & treatment plan – personalised advice and care
- A preventive and outcome focused approach which includes the skills of the whole team in the delivery of primary dental care

Key issues in dentistry....?



World Health Organization

Key guiding principles for advancing our common agenda

- ✓ 1. Leadership and coordination role of chief dental officers
- ✓ 2. A public health approach to oral health
- ✓ 3. Integration of essential oral health care in PHC
- ✓ 4. Developing innovative workforce models
- ✓ 5. People-centred oral health care
- ✗ Optimizing digital technologies for oral health
- ✗ Environmentally sustainable health systems



Harvard School of Dental Medi... · 1d ...

“We came together through education, introspection, and most powerfully, through collective action. Uncertainty was our catalyst, driving us to abandon the desire to return to normalcy and instead, work towards the need for the world to be better.” –Praveen Kumar Guntaka, DMD22.



ALT